

# The Recent New Development of Chinese Museums



Chinese Museums Association  
Song Xinchao, Ph. D

**I. Leaping Development in the Past Decade**

**II. Open to the Public for Free**

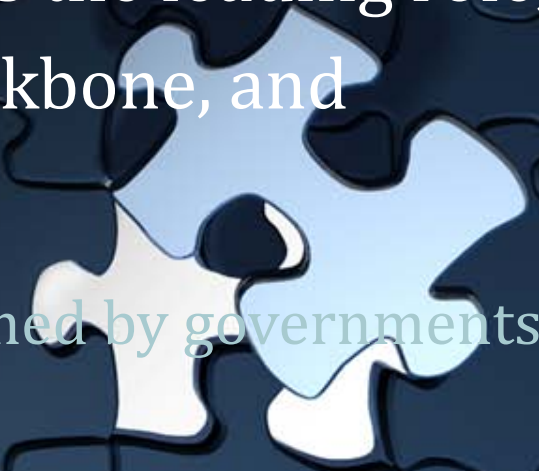
**III. Assessment, Grading and Professional  
Upgrading of Chinese Museums**

**IV. International Cooperation**

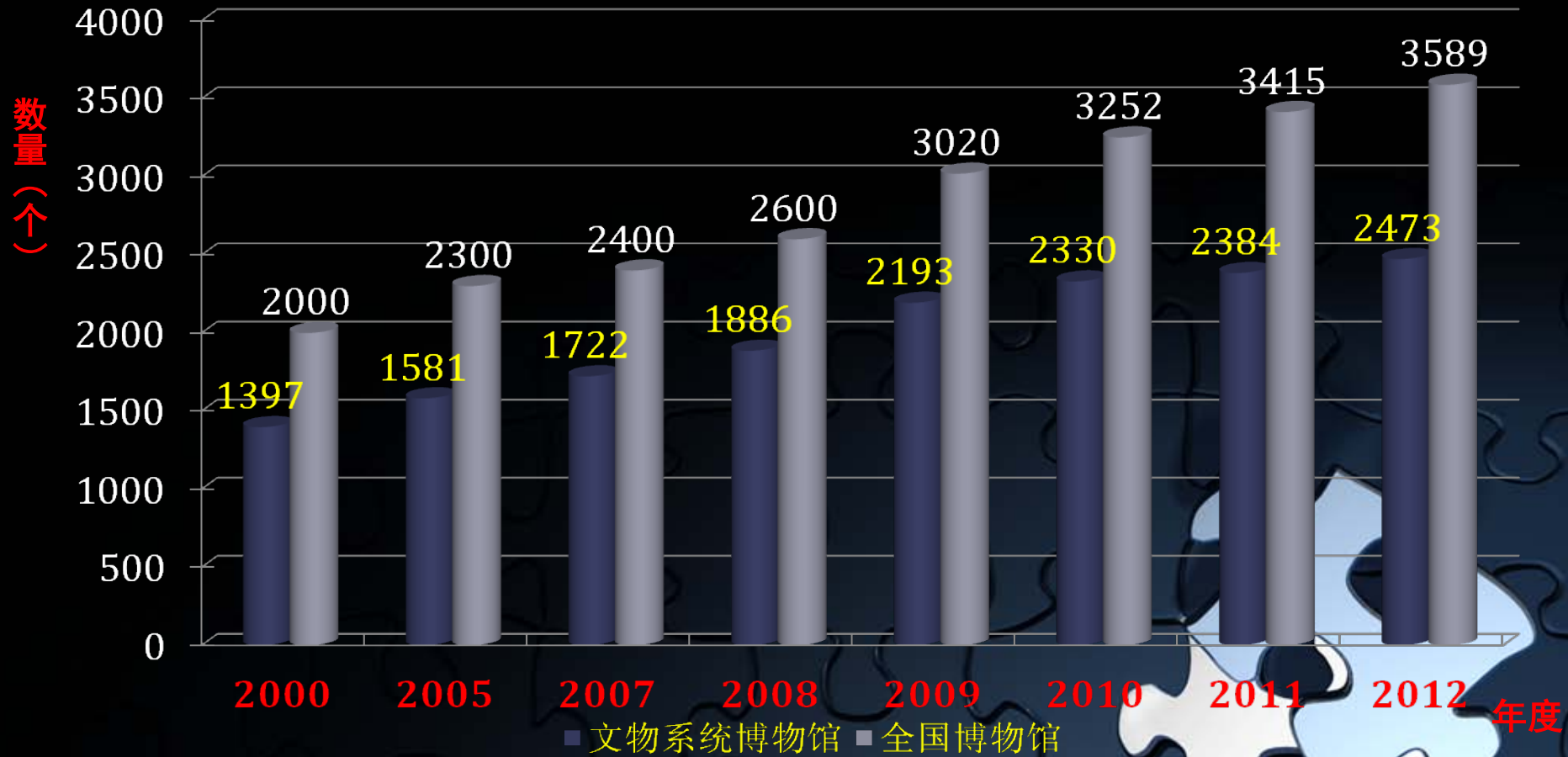


# Part I: The Leaping Development of Chinese Museums in the Past Decade

- There are altogether 3589 legally registered museums nationwide until 2011
- The number grows at a speed of about 100 per year.
- A museum system has gradually taken into shape with the museums at national level as the leading role, the state-owned museums as the backbone, and private museums as supplement.
  - Currently, there are 2473 museums owned by governments of different levels



# The Increase of Museums in China in the Past Decade



Museums from the system of cultural relics  
All the museums in China

- The rise of private museums;
  - The registered private museums nationwide have reached 535.
  
- The further development of specialized museums;
  
- Large-scale exhibition;
  - From simple display to diversified exhibitions;
  - In 2007, there are more than 7000 exhibitions, and reached more than 16000 in 2012.



- New construction and renovation and expansion of the Museums of all levels:
  - The overwhelming majority of provincial museums have finished their renovation and expansion except a few;
  - Archaeological discoveries and the site museums



# The Modernization of Museum Construction



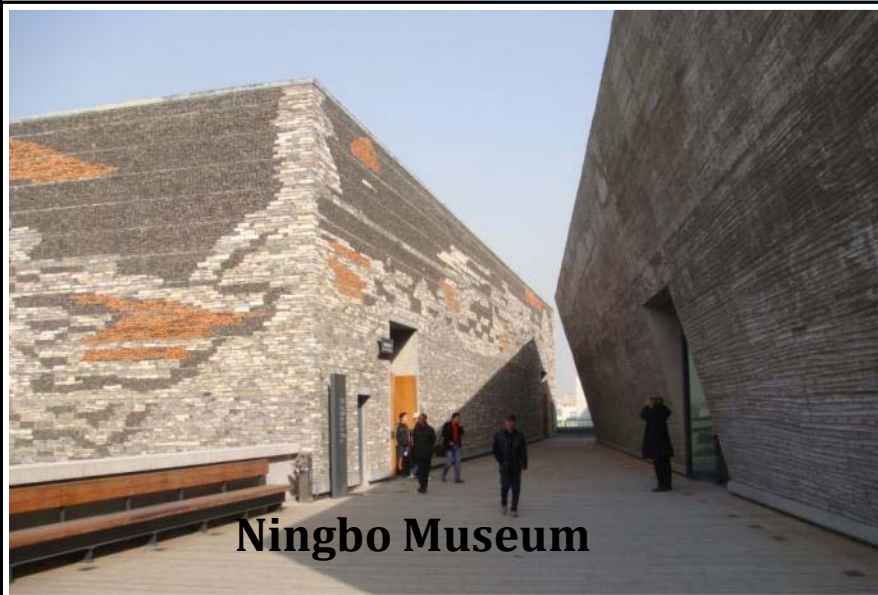
# City Museums



**Suzhou Museum**



**Qingdao Museum**



**Ningbo Museum**



**Zhenjiang Museum**



# Archaeological Site Museum



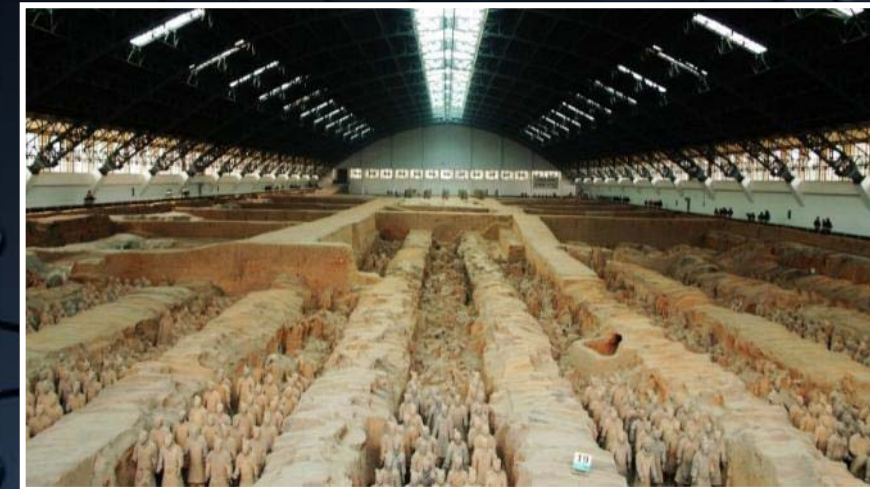
四川广汉三星堆博物馆



周口店遗址博物馆



汉阳陵博物馆



秦始皇兵马俑博物馆

## Part II: Museums Open to the Public for Free

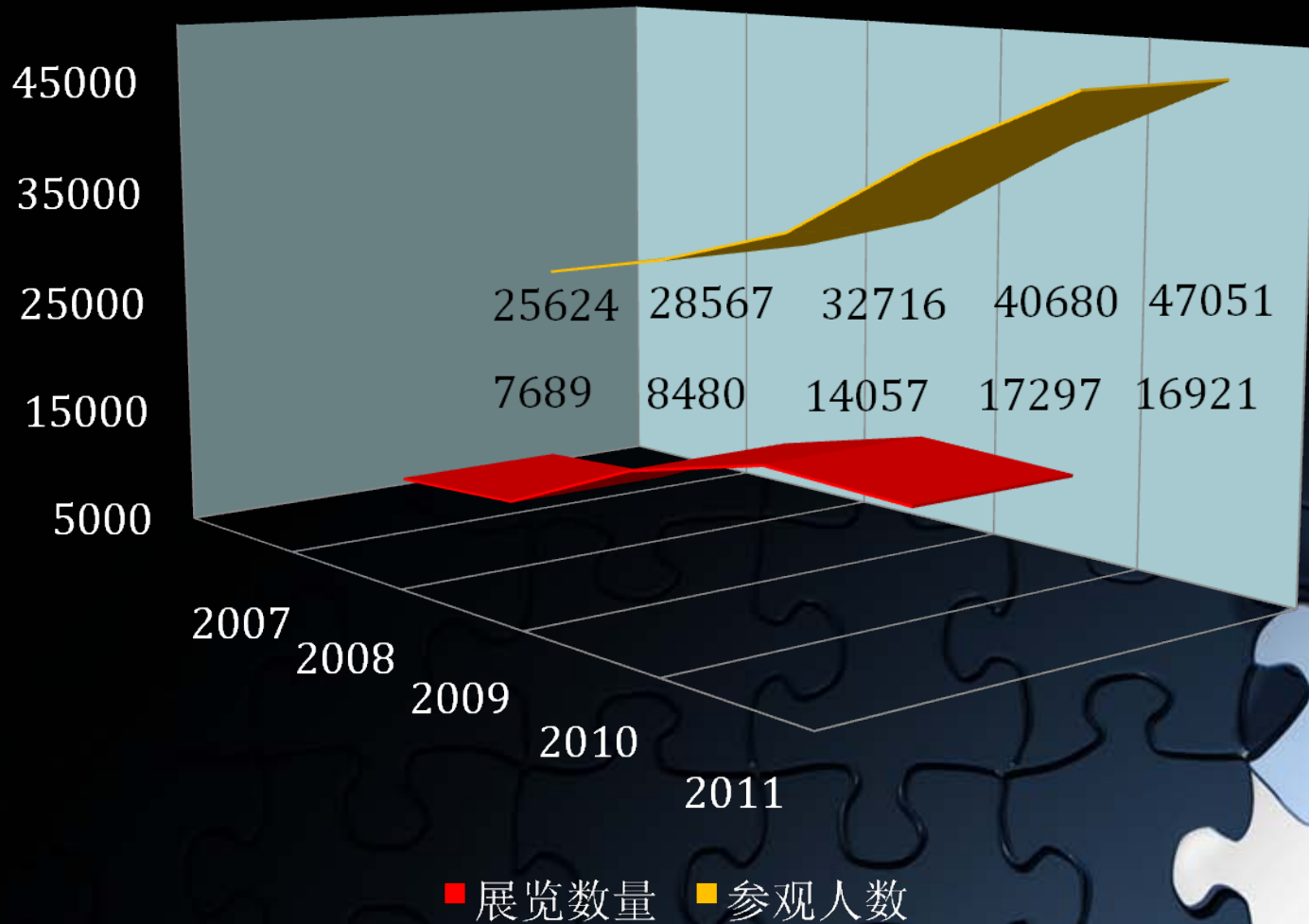
- ❑ The museum philosophy transforms from object-orientation to visitor-orientation;
- ❑ The upgrading of exhibition sophistication and increase in quantity;
- ❑ Museums open to the public for free in some areas in 2004;



- Pilot in 2008, and full operation in 2009;
- 1804 museums owned by governments of all levels open to the public for free;
- Significant growth and structure changes of the audience after free admission.



# The Change of the Number of Exhibitions and Visitors in the Recent 5 Years



the number of exhibitions the number of visitors

# Museums Open to the Public for Free



**Hubei Provincial Museum**



**Shanghai Museum**



**Shaanxi Museum of History**



**Nanjing Museum**

## Part III: Assessment, Grading and Professionalization

- ❑ Assessment and grading started at the same time of free admission.
- ❑ The State Administration of Culture and Heritage (SACH) initiated the national first-class museum assessment and grading work in February 2008.



- According to the National Museum Assessment Measures (trial implementation ), Museum Assessment Interim Standard and The National Museum Assessment Committee Assessment Principles and Measures
- 100 national first-class museums
- 171+51 national second-class museums
- 288+150 national third-class museums
- Operational assessment of museums.



# Operational Assessment of Museum

- **Qualitative assessment's Index system**
  - **Collection management**
  - **Research**
  - **Exhibition and Education**
    1. **Permanent exhibition**
    2. **Representative Temporary exhibitions with creativity**
    3. **Museum interpretation**
    4. **Education programs**
  - **Public relations and service**
    1. **Public relations**
    2. **Service**
    3. **Museum website**





# □ Qualitative assessment's Index system

## □ Collection

1. Collection
2. Repairing

## □ Research

## □ Education and exhibition

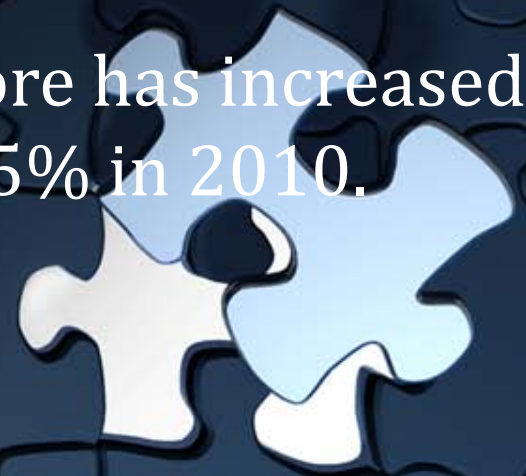
## □ Personnel training

1. Intake of talents
2. Professional training

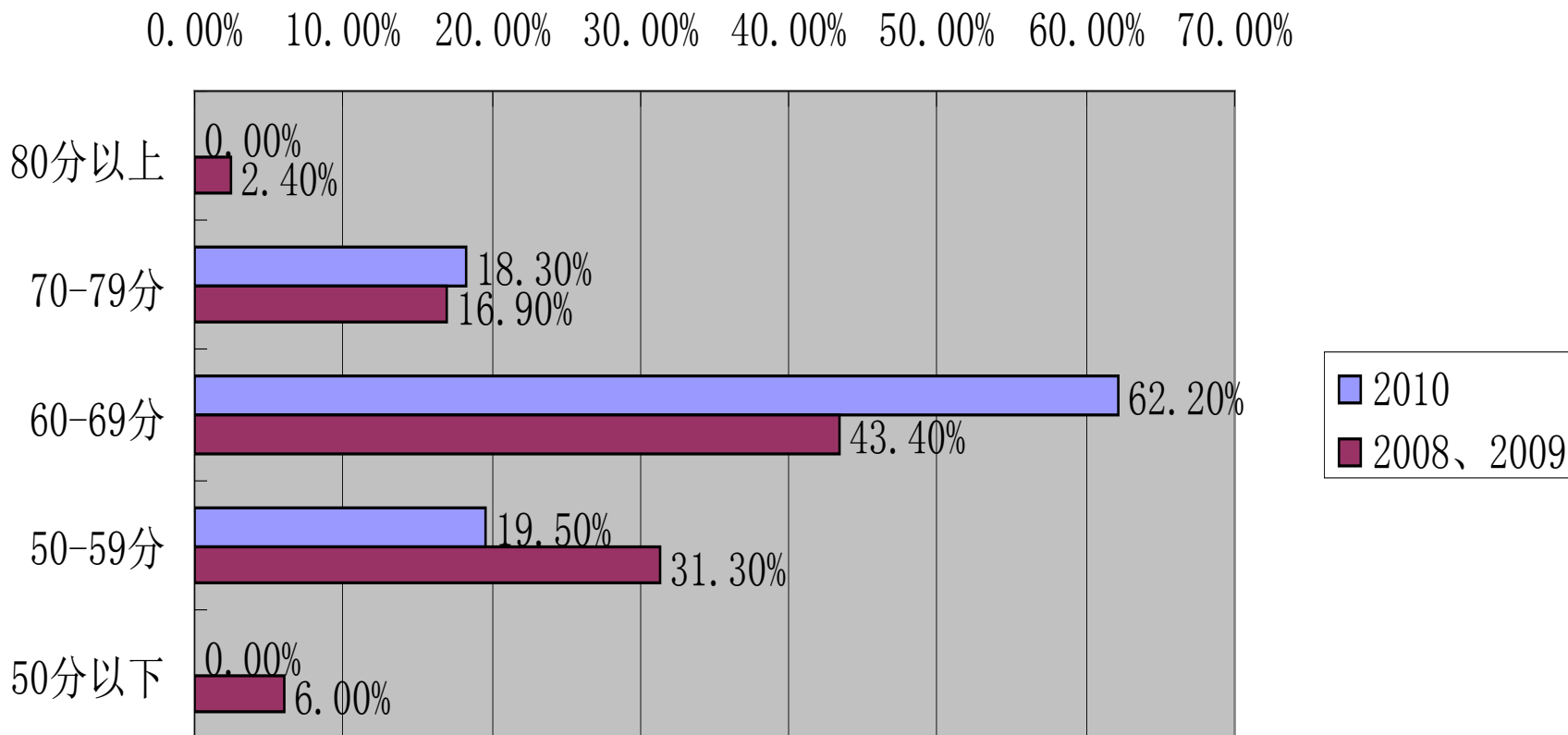


# Assessment of Museum Operation

- ❑ The operation assessment of national first-class museum started in 2009 have greatly promoted the healthy development of museums.
- ❑ For example, 5 museums less than 50 scores in the year of 2008 and 2009.
- ❑ All the museums are more than 50 scores in 2010, with an average of 65 scores.
- ❑ The proportion of 60 or above in score has increased from 62.7% in 2008 and 2009 to 80.5% in 2010.



# Operational Assessment of Museums



	50分以下	50-59分	60-69分	70-79分	80分以上
2010	0.00%	19.50%	62.20%	18.30%	0.00%
2008、2009	6.00%	31.30%	43.40%	16.90%	2.40%

# Part IV: The international exchange

- ❑ Expand from exhibition field to preservation of cultural relic;
- ❑ Pay more attention to the museum education and management;
- ❑ Support personnel exchanges and training between Museums;
- ❑ Active participation in international and regional museum organizations



- Home
- Special Exhibitions



# china

dawn of a golden age, 200–750 AD

From the late Han dynasty (third century A.D.) to the High Tang (mid-eighth century), Chinese civilization underwent a transformation as a result of the massive immigration of peoples from northern Asia and of extensive trade along the Silk Road. This landmark exhibition—one of the largest ever to come out of mainland China—tells the story of Chinese art and culture during this formative period.

Explore a selection of the outstanding works of art in the exhibition using this Web feature.

Exhibition Feature  
For Teachers and Students

The exhibition and its accompanying catalogue are made possible by The Starr Foundation.

Additional support for education programs has been provided by The Freeman Foundation.

Support for the catalogue has also been provided by The Andrew W. Mellon Foundation.

An indemnity has been granted by the Federal Council on the Arts and the Humanities.



# International Cooperation – Cultural Relics Protection

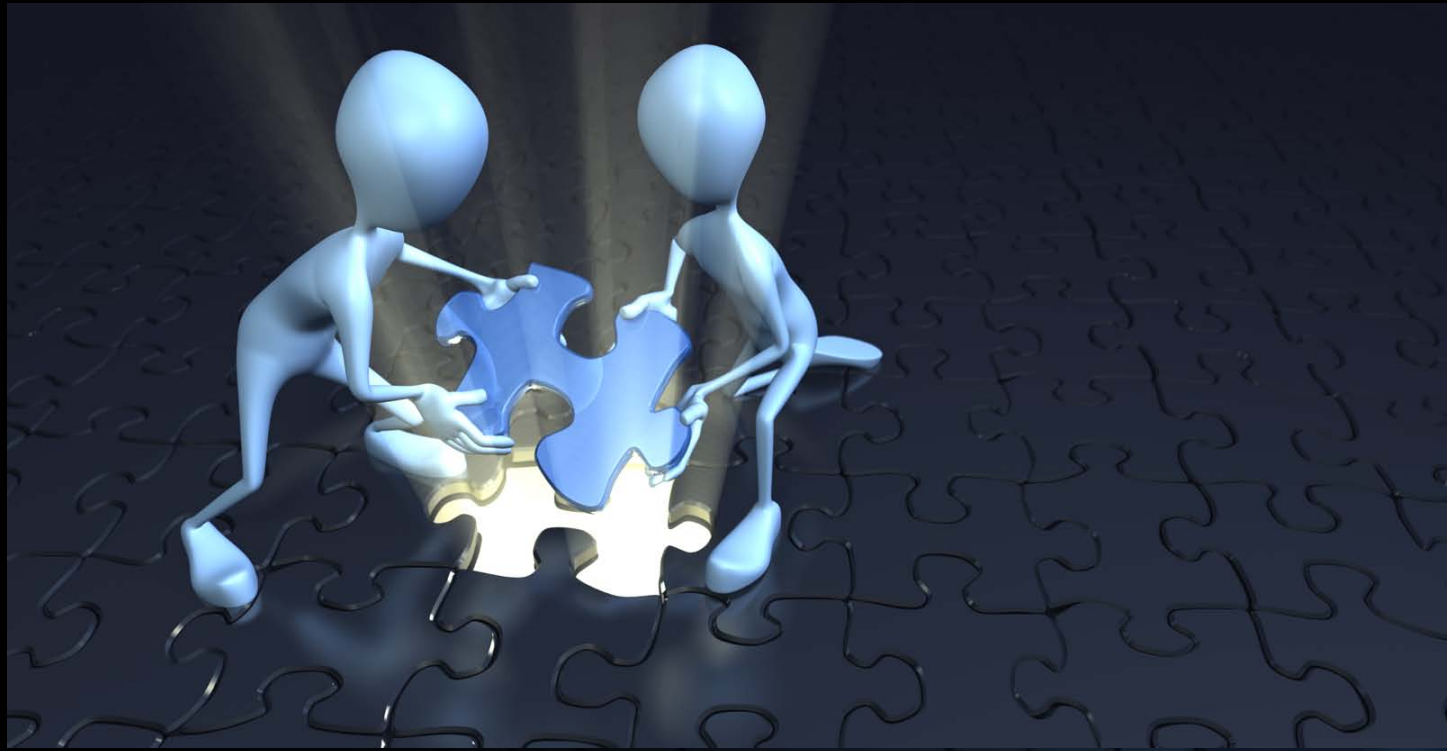


# International Exchange Between Museums









Thank you!

