

# Cultural Change and Museums in the Arab World

Barry Lord, Co-President, Lord Cultural Resources

Keynote Address, September 28, 2010

Text and Presentation are available on  
[www.lord.ca](http://www.lord.ca) and [www.culturalchange.ca](http://www.culturalchange.ca).

**Intercultural  
Communication**

**Social Cohesion**

The diagram consists of two rounded rectangular boxes. The left box is green and contains the text 'Intercultural Communication'. The right box is blue and contains the text 'Social Cohesion'. A red diagonal line is positioned between the two boxes, pointing from the top-right towards the bottom-left, suggesting a causal or directional link from the left box to the right box.

Intercultural  
Communication

Social Cohesion

# Cultural Change

Intercultural  
Communication

Social Cohesion

# Lord Cultural Resources



## Network Offices in:

Toronto

New York

San Francisco

Paris

Madrid

Mumbai

Beirut

Cairo

**Creating Cultural Capital**

Dhahran

Beijing

# Lord Cultural Resources Manuals

Published by AltaMira, distributed by the AMA

*The Manual of Museum Exhibitions (2003)*

*The Manual of Museum Planning (2<sup>nd</sup> ed., 1999)*

*The Manual of Museum Management (2<sup>nd</sup> ed., 2009)*

*The Manual of Museum Learning (2007)*

*The Manual of Strategic Planning for Museums (2007)*

Visit [www.lord.ca](http://www.lord.ca) for more details.



# Artists, Patrons and the Public: Why Culture Changes

AltaMira Press, 2010



In their new book, Barry Lord and Gail Dexter Lord focus their two lifetimes of international experience working in the cultural sector on the challenging questions of why and how culture changes.

Visit [www.culturalchange.ca](http://www.culturalchange.ca) to find out about your role and the role of museums in cultural change.

# Seven Principles of Cultural Change



1. Each social group has its own culture
2. The quantity of surplus controlled by a social group impacts the extent of its culture
3. Each social group seeks its own values in the art it patronizes
4. Culture changes in accordance with changes in access to surplus
5. Quantitative change in patronage leads to qualitative cultural change
6. Cultural validation and invalidation by dominant cultures affect all others
7. Intercultural aspects of cultural change offer new opportunities

# Cultural Change among Museums in the Arab World

1. Increased access to collections of the heritage.
2. An enhanced educational role.
3. More equitable international partnerships.

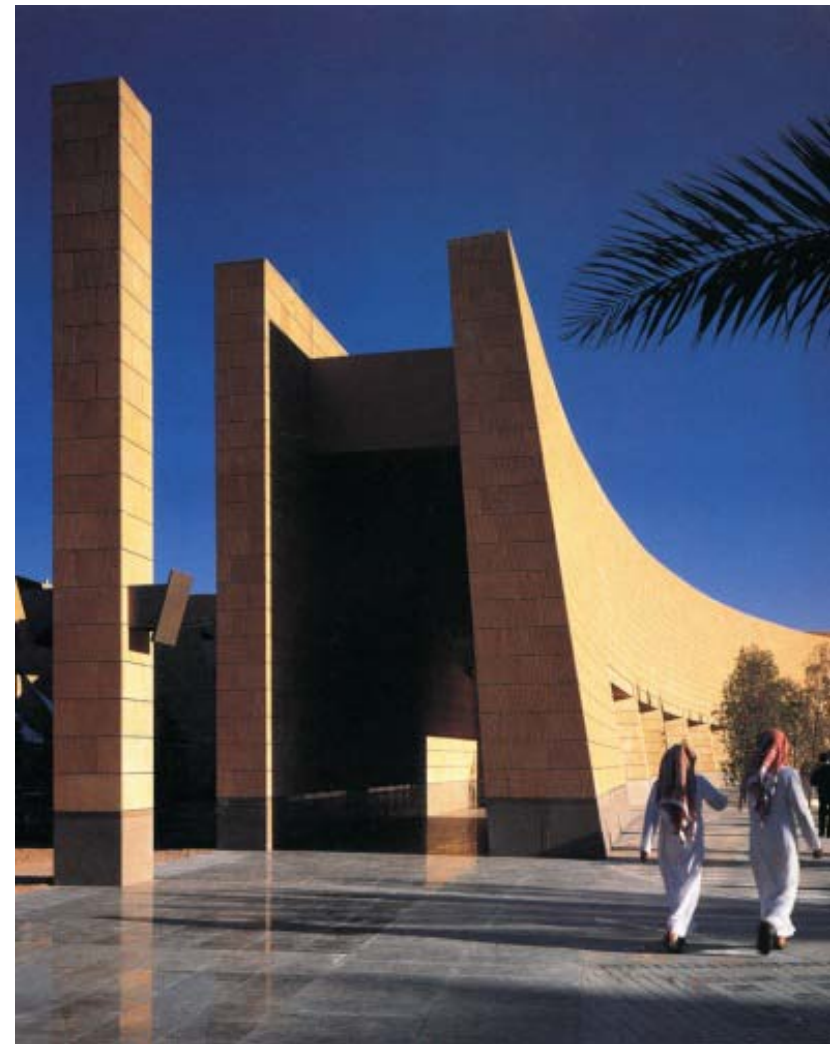
# Carthage, Jerba, Kairouan, Sousse

Heritage Site Development Plan, 2003–04



# Saudi Arabian National Museum

Riyadh, Exhibition Planning, Design & Project Management 1996–99



# Qatar Museum of Islamic Art

Doha, Original Functional Program 1998–99



# Qatar Museum of Islamic Art: Collection Development

Doha



Alqubaa Head Ornament



Coins of the Abbaside

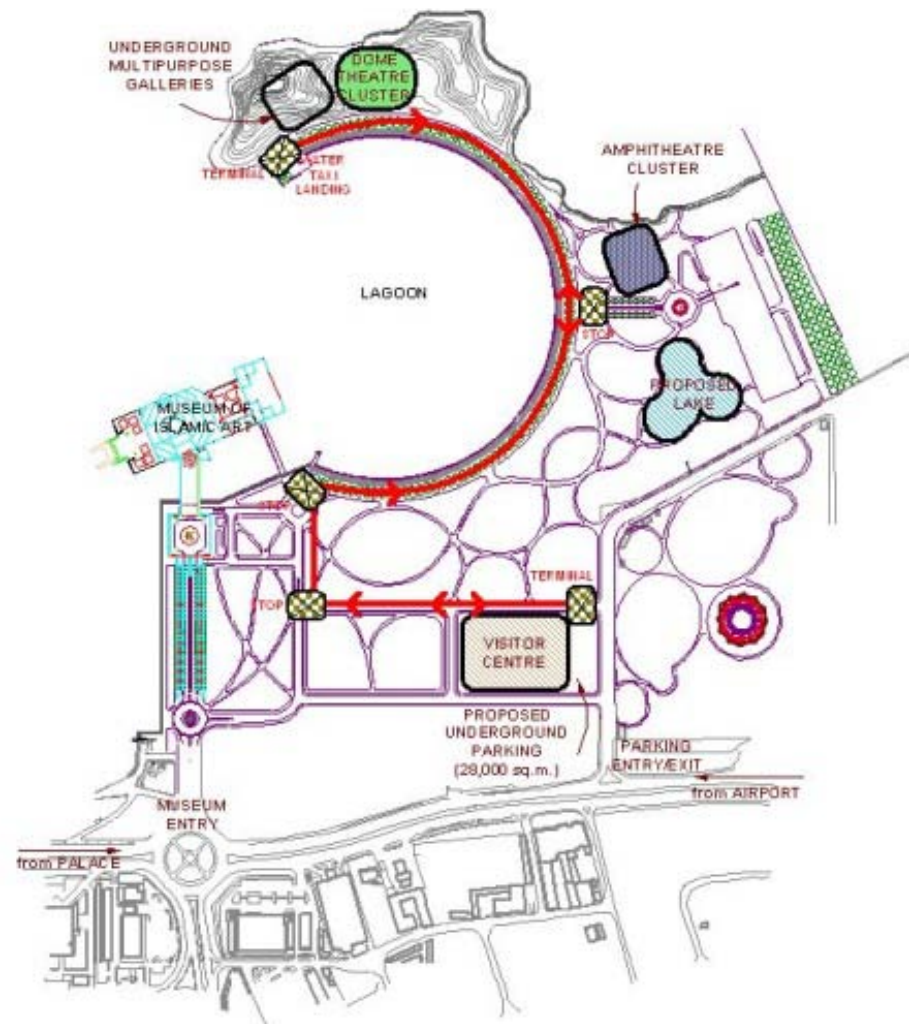
# Qatar Museum of Islamic Art: Education Program

Doha



# Qatar Museum of Islamic Art

Doha, Cultural Facilities Plan for QMIA Park 2007–09



# Sheikh Zayed National Museum

Abu Dhabi, Master Plan and Architectural Competition 2007–08



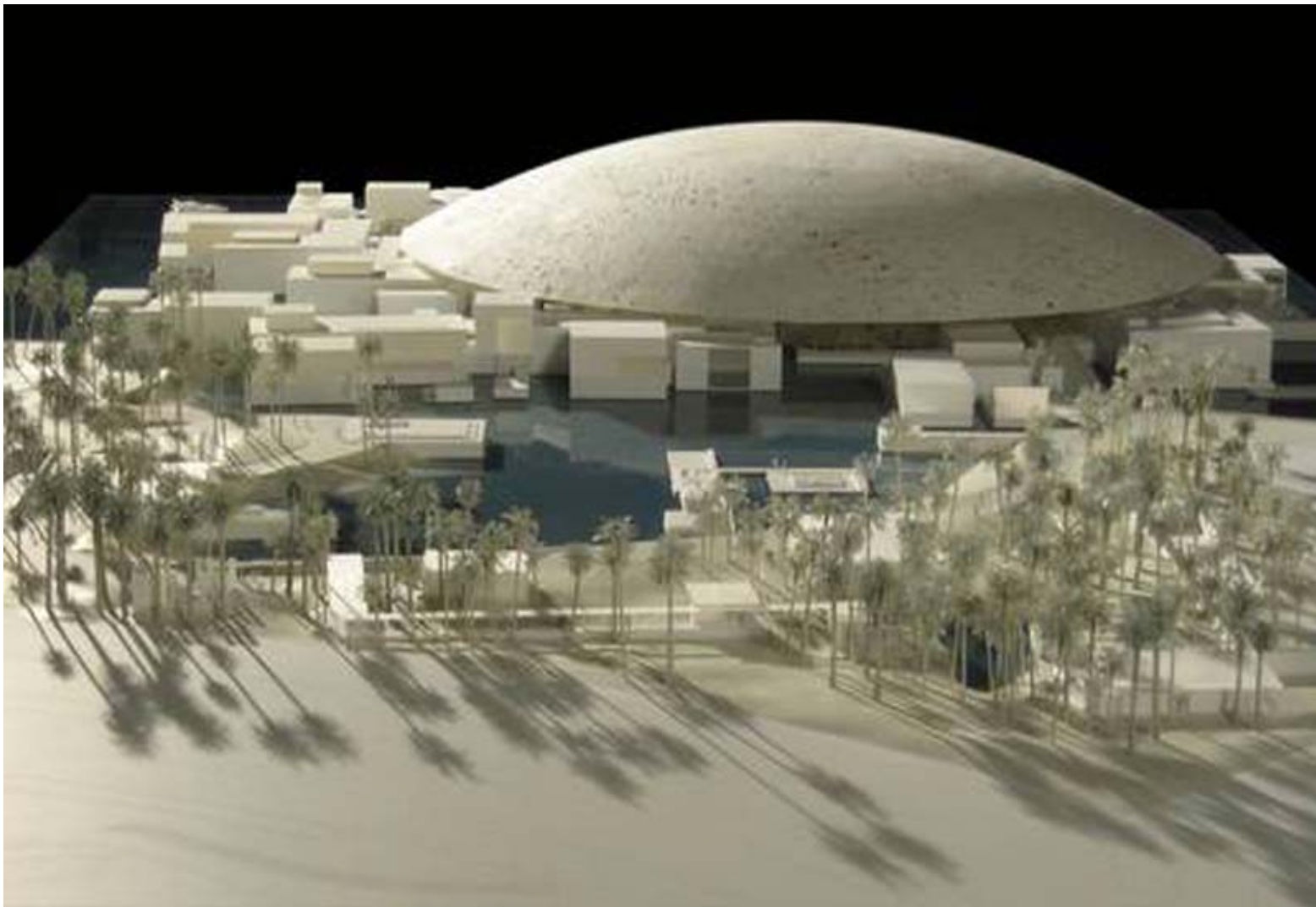
# Maritime Museum

Abu Dhabi, Master Plan 2006–07



# Louvre Abu Dhabi

Abu Dhabi, Concept Plan 2006–07



# Sheikh Zayed National Museum

Abu Dhabi, Master Plan 2007–08



# Manarat Al Saadiyat

Abu Dhabi



# National Museum of Egyptian Civilization

Fustat, Cairo, Educational Program Planning 2004–05



# Grand Egyptian Museum

Giza, Exhibition Tender Management 2010



# The Children's Museum Jordan

Amman, Education Program Review 2008



# King Abdulaziz Center for World Culture

Dhahran, Program Planning and Development 2008–ongoing



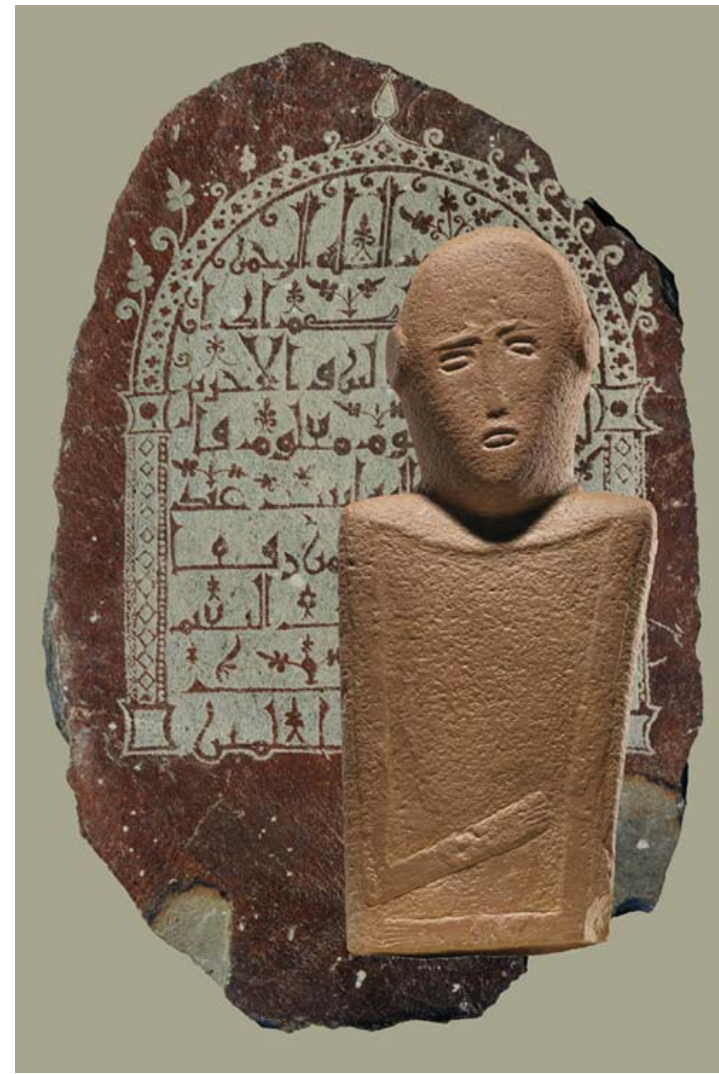
# Arab Nations Take Control

Over the past half-century Arab nations have taken increasing control over their own:

- Natural Resources
- Airlines
- Cultural Tourism
- Archaeology
- Architectural Heritage
- Museum Collections
- International Partnerships
- Contemporary Art

# Routes de l'Arabie

Musee du Louvre, Paris, 2010



# Edge of Arabia

Venice Biennale, 2009



# Challenges, Limitations and Issues

- Need for sustained peace and stability
- Lack of a museum-going tradition
- Relatively low levels of education for many
- Status of pre-Islamic history
- Need for training
- Need to publish and translate

# Cultural Change and Museums in the Arab World

Barry Lord, Co-President, Lord Cultural Resources

